



Lesson Plans Structure

.....

Funded by the European Union. Views and opinions expressed are however those of the author(s) only and do not necessarily reflect those of the European Union or the European Education and Culture Executive Agency (EACEA). Neither the European Union nor EACEA can be held responsible for them.



Lesson 3.3 – Lesson Plans Structure

- Designing lesson plans using WILOS360 360° cultural content
- WILOS360 – Witness Local Customs in 360°
- Erasmus+ KA220 Project

Purpose of This Lesson

This lesson helps teachers understand:

- how WILOS360 lesson plans are structured
- how pedagogy guides the use of 360° content
- how to design classroom activities step by step
- how to adapt lesson plans to their own teaching context



WILOS360

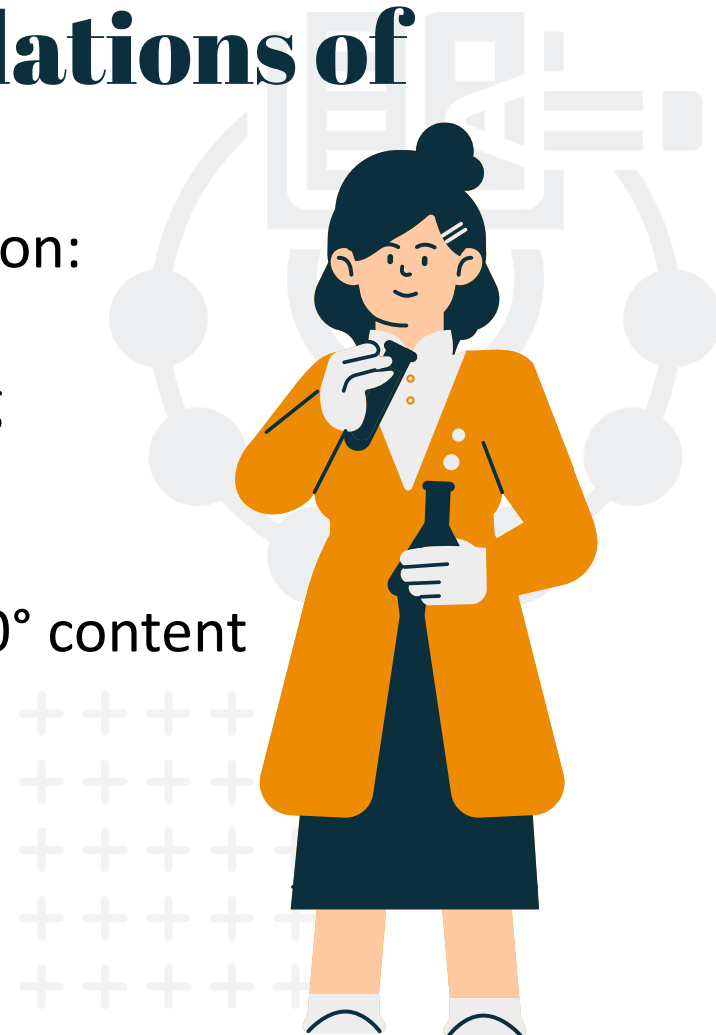


Co-funded by
the European Union

Pedagogical Foundations of WILOS360

WILOS360 lesson plans are based on:

- learner-centred approach
- active and cooperative learning
- inductive and discovery-based methodology
- cultural immersion through 360° content
- competence-based learning





Learning by Doing and Cooperating

- Each lesson plan promotes:
 - learning by doing
 - collaboration and teamwork
 - problem-solving and creativity
- Activities develop cognitive, social and digital skills.



Cultural Immersion with 360° Content

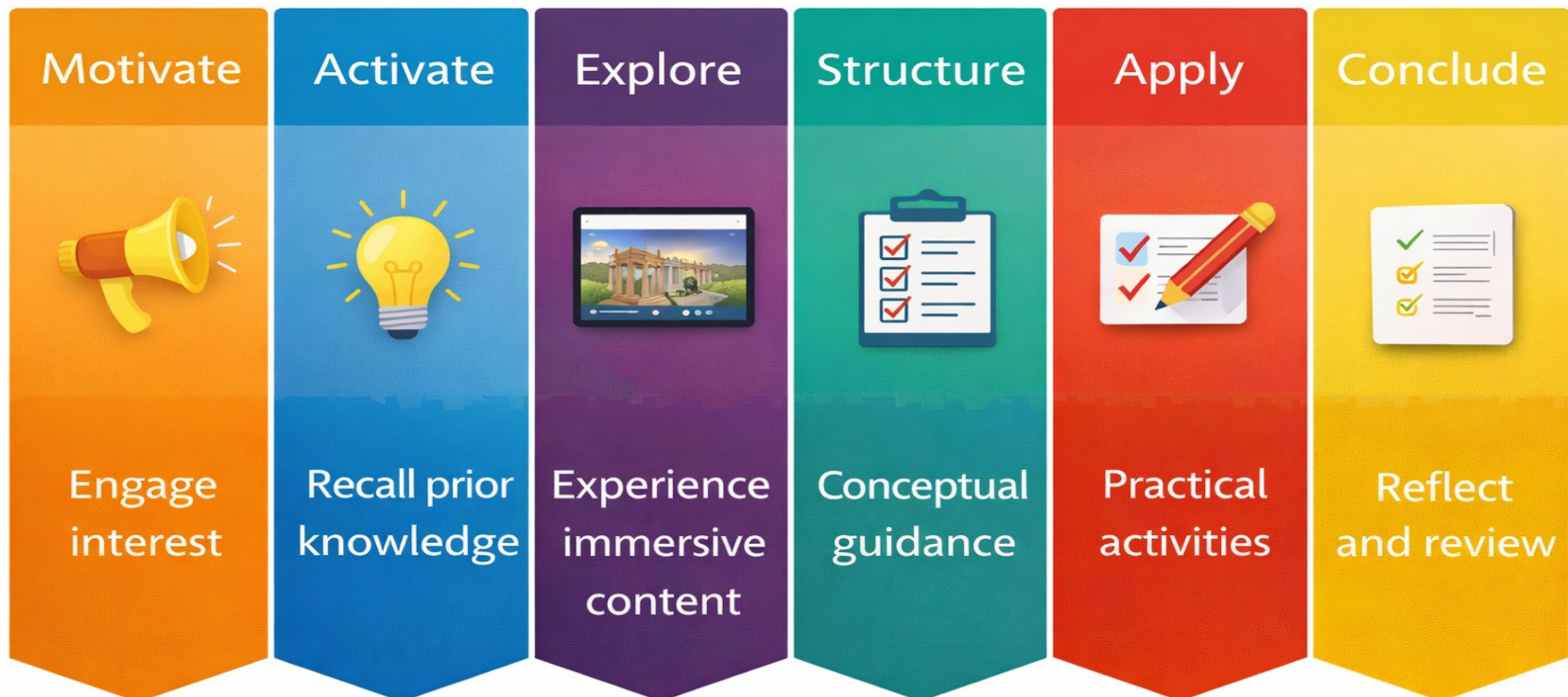
360° cultural content is used to:

- explore real cultural events
- develop cultural awareness
- encourage critical thinking
- support experiential learning



The WILOS360 Session Design Model

All lesson plans follow six pedagogical phases:




Phase 1 – Motivate



- Spark curiosity and present the challenge.
- Introduce the cultural context.
- Use 360° content as a motivational hook.

Phase 2 – Activate



- Connect with prior knowledge.
 - Discuss what students already know.
 - Prepare learners for exploration.
- 



Phase 3 – Explore



- Students explore new content actively.
- Observe 360° material.
- Work individually or collaboratively.



Phase 4 – Structure



- Organise and consolidate learning.
- Introduce new concepts or language.
- Clarify observations and ideas.



Phase 5 – Apply



- Transfer learning to new contexts.
- Apply knowledge in guided tasks.
- Move towards freer, real-life activities.

Phase 6 – Conclude



- Transfer learning to new contexts.
- Apply knowledge in guided tasks.
- Move towards freer, real-life activities.



The WILOS360 Lesson Plan Template

Each lesson plan includes:

- title and cultural event
- target group and duration
- learning objectives
- classroom organisation
- teaching process
- attention to diversity
- worksheets and assessment

Example: Gria Sykou – Old Woman Sykou



This lesson plan shows:

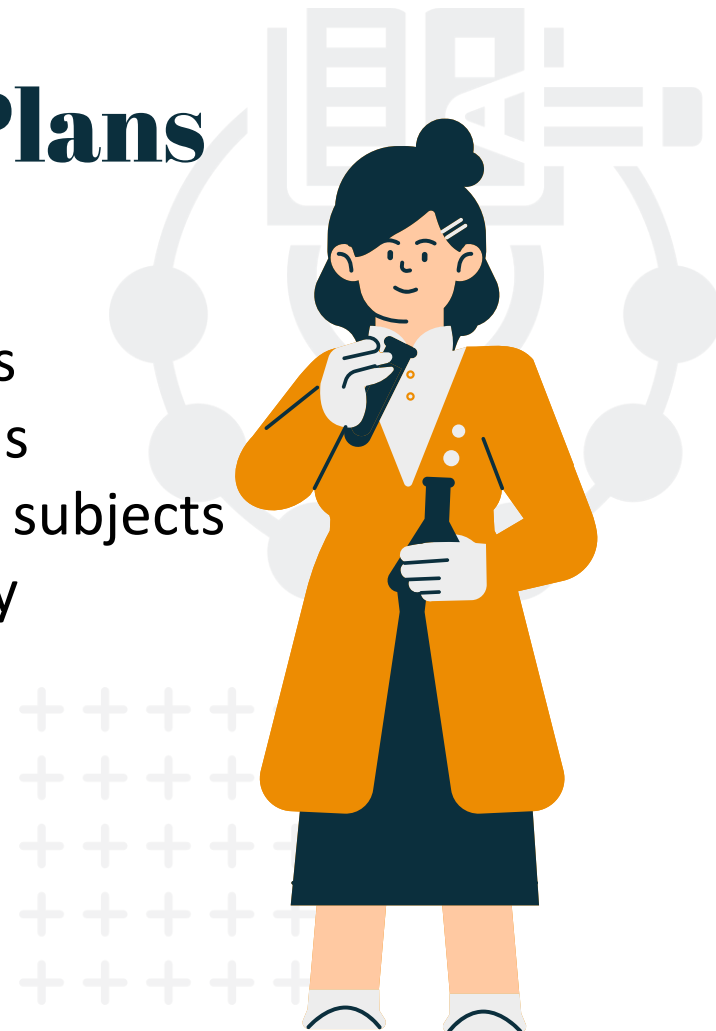
- use of 360° cultural content
- application of the six-phase structure
- integration of culture and active learning





Adapting Lesson Plans

- Teachers can:
 - adapt duration and activities
 - adjust tasks to student needs
 - modify content for different subjects
- The structure supports flexibility



Key Takeaways

WILOS360 lesson plans:

01

follow a clear pedagogical structure

02

place students at the centre

03

use 360° content meaningfully

04

support competence-based learning





Reflection Activity

- Choose a 360° cultural activity.
- Describe:
 - the pedagogical phases you would use
 - student activities at each stage
 - how you would adapt the lesson
- 150–200 words

